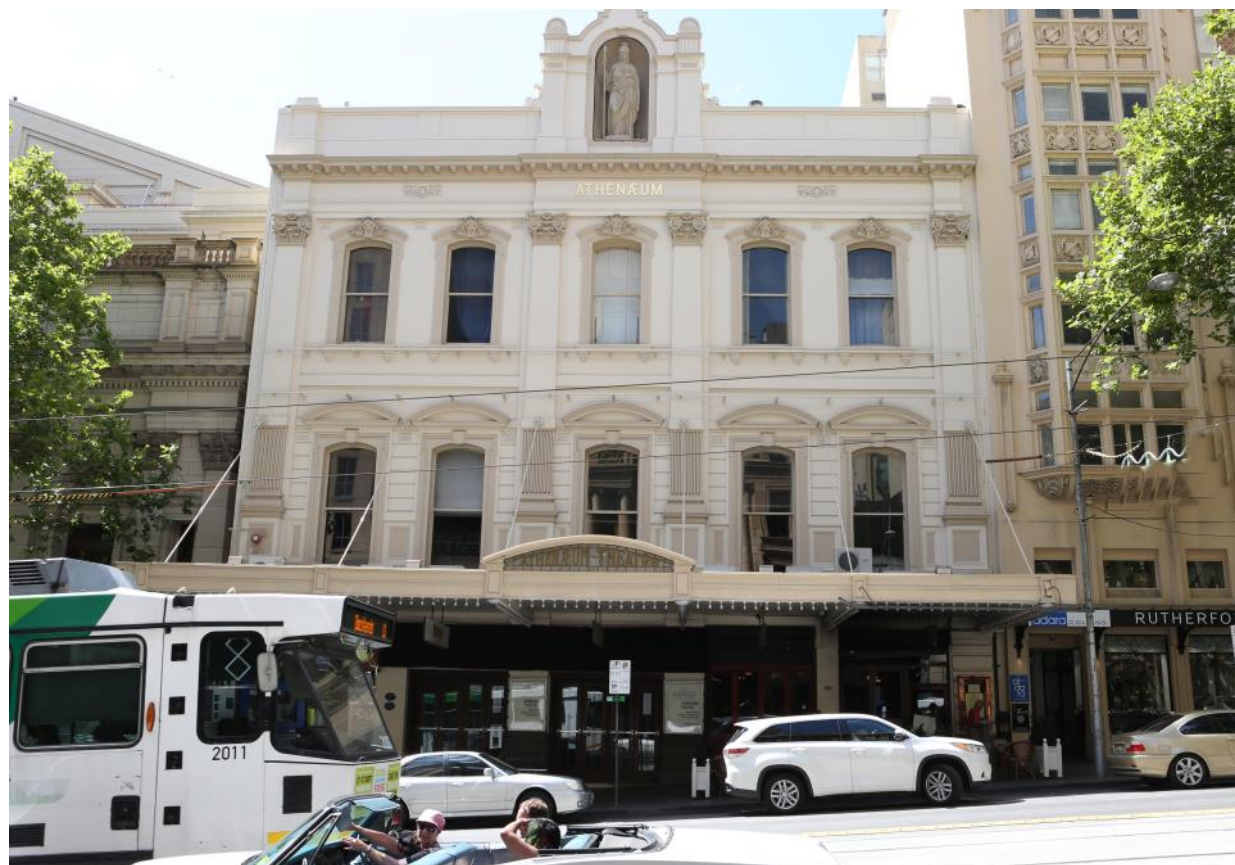




# **The Melbourne Athenaeum Incorporated**

## **ANNUAL REPORT 2016**





The Melbourne Athenaeum. A carousel pop-up book created by Melbourne artist Anne Kucera. Every detail of the library, theatre and even the lift was hand cut, folded and coloured. During her residency, Anne revealed that each book she produces can take up to six months of painstaking and detailed work of trial and error. The pop up art form has a rich and remarkable history with the earliest form, the vovelle, dating back at the 13th century.





# The Melbourne Athenaeum

The Melbourne Mechanic's Institution was the model for Institutes in settler towns across 19th century Victoria. It was a place where the most important civil and social issues were discussed. Self-funded since its inception the Institution is flexible and has responded to community need. Growth AND demise are an intrinsic part of its story.

There continues to be strong representation of Mechanic's Institutes, Athenaeum's and other subscription libraries across the globe. The strength of the movement in Victoria is best represented in the award winning book *These Walls Speak Volumes* by Pam Baragwanath and Ken James.



## President's Report

The last year has seen the Melbourne Athenaeum continue to expand and offer improved services to members with one of the biggest changes being the integration of the library collection. The collection has historically been sorted by genre but with many contemporary authors spanning multiple genres we decided to integrate the collection. The integration has been well received. The library staff has done a great job with displays to highlight authors within genres and 'forgotten classics' to assist users around the new-look library.

During the year we have continued to expand the musical program with many sell-out performances. If you haven't attended any musical events I would encourage you to do so. The library offers an intimate setting for some very special performances and this year the musical program is being expanded to include a contemporary series with performers including Stephen Cummings and Deborah Conway.

During Rare Book Week Anne Kucera was our artist-in-residence. Anne created an artwork based on the carousel book design, which represents the theatre and library in great detail.



The work is on display in the foyer of the library along with other literary-based artworks we have commissioned in previous years.

The organisation is in a strong financial position with positive cash flow and a healthy cash position. The committee has a broad cross-section of professional skills with a strong commitment to the ongoing improvement of the library and the organisation. There are a number of sub-committees in place that are focused on property management, marketing and membership, finance and library activity.

I would like to take this opportunity to thank all members who have donated to the public fund.

The fund is used to upgrade the library and building. Contributions to the fund are tax deductible and I would encourage all members to consider a donation when letters are sent out mid-year.

*Don Smith*

**President**

## **Business Manager's Report**



It seems at the close of each year, the staff and volunteers breathe a sigh of relief – phew! That was a big year. While we vow and declare the following year will be quieter, less hectic, it rarely happens and 2016 proved to be yet another year of creative growth.

### **Volunteers**

By sheer numbers alone it is clear that volunteers are the backbone of our organisation. In 2016 volunteers gave over 5,000 hours to the operation of the library, events and archives. Our volunteer committee, library and archive volunteers support the organisation in the areas of governance, research and writing, IT, collection development, member services and library support. There is no doubt the organisation owes

its financial stability to the committed and dedicated contribution of the volunteer management committee and those volunteers who generously give their time each week to support the smooth operation of our beautiful library and remarkable archive.

That said the staff provides the structure that enables the continued improvements to a library service and events program that enhances and enriches the membership experience. Their commitment and enthusiasm for the library probably makes it very easy to contribute more hours than they are paid for, and I would personally like to thank them for their shared sense of responsibility to the well-being of the organisation, the building and the library in particular.

Most of the staff and volunteers are also library members like you and I, and on behalf of all the membership, we thank you for your skills and each and every hour you contribute to this wonderful organisation.

### **Learn, Discuss, Enjoy, Engage**

In 2016 the Melbourne Athenaeum Library presented authors, historians, artists and musicians to inform and entertain members and their guests. We heard from Arnold Zable, Nick Richardson and Rosalie Ham; Professor Stuart McIntyre and Richard Overell; Anne Kucera and Michael Fikaris; Miranda Hill, Ysk, Luka Bloom, Matthew Horsley and Inventi Ensemble. Indeed more than 20 events were held during the year, reaching an audience of over 1,000 people.

Discussion groups, under the leadership of Rose Blustein, and with the support of Lynne Johnston, Nigel Kennedy, Anna Clatworthy and Matthew Gisborne, are flourishing. Each month there are now four general fiction book clubs, a crime fiction book club and a screen club that could end up forming a second in 2017 due to the popularity of this group.

Tom Coleman, Marjorie Dalvean and I continue to provide informative talks to groups visiting the library; and now talks are also given at historical societies and Probus group meetings within the greater Melbourne area. This has been a successful initiative to expand our reach and

share the organisation's story.

### Maintenance

Building maintenance is an ongoing financial commitment and work was completed in 2016 to paint the public access areas in the downstairs foyer, and main stairs right to the Athenaeum 2. The library ceiling, painted only four years ago, has started to deteriorate again. This is due to an early 20<sup>th</sup> century calcimine paint layer that is difficult to remove and restore. Our maintenance man, Lech Janusz, continues to keep the building and library in the best shape it can be given our limited resources.

### Books Published

In 2016, the Melbourne Athenaeum supported volunteer researcher and historian Anne Marsden to publish her work ***The Making of the Melbourne Mechanics' Institution: The movers and shakers of pre-gold rush Melbourne***. This book explores the origin of the mechanics' institute movement in Australia and studies the links between the Melbourne Mechanics' Institution (now of course, the Melbourne Athenaeum) and two of the earliest mechanics' institutes established in Australia, Sydney and Hobart. Another successful publication supported by the Melbourne Athenaeum, ***These Walls Speak Volumes***, by the industrious and untiring mechanics' institute supporter Pam Baragwanath and historian Ken James received the **2016 Victorian Community History Award**, the highest honour awarded, recognizing the most outstanding community history project submitted in any category. The awards are presented annually by the Public Records Office in partnership with the Royal Historical Society of Victoria.

### Thank You

The Annual Giving appeal raised in excess of \$8,000, from just over 80 members, some of whom contribute to the appeal each year. The donors' contributions provide a direct benefit to the library. Donations are kept separately in a public fund, and can only be used to benefit and improve the library. Consider adding your support this year, by helping the library with a donation. All donations over \$2 are tax deductible.

*Sue Westwood*

### Business Manager

Marketing Coordinator Lawana, Library & Administration Coordinator Tom & Business Manager Sue.

## Librarian's Report

In 2016 some major physical changes occurred in the library. During August we closed our doors for 2 weeks whilst our new fiction shelving was rebuilt and then the entire fiction collection was integrated into a single sequence. This was a



massive task as the entire fiction collection was removed from the shelves while the rebuild took place, then re-shelved in alphabetical sequence. Members are now able to browse the entire fiction collection seamlessly.

We also relocated some of the non-fiction collection and re-shelved the biography collections onto two new free standing units. Members have been very positive about the new shelving. We also purchased 70 new folding seats to be used for events and an ottoman to replace the tub chairs in the display area.

The overwhelming success in programming continues to be our musical events, attracting sell-out audiences for most performances. Other events to highlight were Open House which attracted some 2,000 visitors to the library and resulted in 17 new memberships. Artist-in-residence Anne Kucera proved a very popular attraction.

In September the library hosted a 'Have We Met Yet?' event which was aimed at local businesses who would like to find out more about their neighbours in Collins Street. Perhaps the highlight of the year was Professor Stuart Macintyre's *Marcus Clarke Lecture* held



during History week attracting in excess of 70 members, with many more being turned away due to lack of space.

We are fortunate to have an amazing team of volunteers who have not only shared their experience and knowledge but have also provided stability throughout the year. Together with our team of professional staff they have made the library a welcoming home for our members.

In November Sue Westwood and I attended the worldwide Mechanics' Institute Conference, presenting a paper about the past, present and future of the Melbourne Athenaeum. It was a great opportunity to meet the leadership teams of other subscription libraries from the UK, USA and Australia.

### **Musical performances held in 2016**

Inventi Ensemble, Matthew Horsley-virtuosic Uilleann pipes, Miranda Hill trio, Inventi Ensemble, Ysk Lightspeed Chamber.

### **Other events**

Irish folk singer, Luka Bloom in conversation with Martin Flanagan, an event held in conjunction with Readers' Feast, International Table Top Games Day,

Launch of *'The Fighter'* by Arnold Zable, Verso Lectures exploring the book as a form of art, Launch of *'The Game of Their Lives'* by Nick Richardson, Richard Overell spoke on *'Collecting Travel Books'* (as part of Rare Book Week), Artist Anne Kucera spoke on 'A Rare Art Form: Pop-Up Books' (as part of Rare Book Week), Fikaris Art Exhibition with local artist Fikaris displaying in the library as part of the Blindsight: On The Verge festival

Launch for *'Award Winning Australian Fiction'* published by Melbourne Books, Launch of *'Famous People Who Have Met Me'* by Greg Noakes, Marcus Clarke lecture presented by Professor Stuart Macintyre, Rosalie Ham discussing her novel *'The Dressmaker'*.

### **Library visits**

Seniors group from Warrnambool, 25 library students from Victoria University, 15 RMIT Librarianships students together with their lecturer, Box Hill Library students visit Group from Rosanna Library, Inner City Living

Group visit, Darebin U3A visit

*Rose Blustein*

**Honorary Librarian**



Library Staff and

Volunteers: Clare, Rose, James, Wallis, Tom, Moyra and



Lynne.

Archives Volunteers: Ruby, Marjorie, Lyn, Christine and Natalie

## Archives Report

Researching the history of this important institution, while uncovering other stories of early Melbourne, keeps us all coming back for more each week and the volunteers and I enjoyed another amazing year working in the archives.

Volunteers: Gerry Ely, Anne Marsden, Ruby Gray, Judy Chivers, Kaye Goldenberg, Anthony Perrin, Christine Perkins continue to find interesting information about events and people involved with the Melbourne Athenaeum, particularly pre 1872 when it was called the Melbourne Mechanics' Institution. I would welcome any members interested in researching Melbourne's early history to join this dedicated team.

Anne Marsden researched, wrote and published her book *The Making of the Melbourne Mechanics' Institution : The Movers and shakers of pre-gold-rush Melbourne* after spending many months reading our history in the annual reports and minute books, which are all held in the archives. The book was launched in August 2016 at the Royal Historical Society of Victoria. The Spring edition of the newsletter of the Mechanics Institutes newsletter noted:

"This book goes much beyond the Ath. connection, for as the subtitle states it covers the "Movers and Shakers" of pre-goldrush Melbourne from a time when Melbourne was but four years old. The Ath. and its membership are inseparable with the formation of the majority of community organisations and its institutions in

the 1840s and 1850s."

### Conservation

To commemorate our 175<sup>th</sup> anniversary, our oldest document, the auction map of 1840, was cleaned and repaired by conservator Guy Morel. In its present state it should last, at least, another 175 years.

### Theatre programs

Several people were interested in looking at our oversized, 1884 silk program including the Library's 2016 artist-in-residence, Anne Kucera. The silk program is safely stored in a very large acid-free box. Dealing with the prominent fold mark in the silk fabric will be a unique task for our conservator. Members are welcome to view our valuable artefacts and can make an appointment generally on a Wednesday or Friday.

Work on our theatre program collection continues with research added to the Museum website "Victorian Collections". Progress has been slow but with all records, the detail must be correct. There are currently 550 records under the names Melbourne Athenaeum and Melbourne Mechanic's Institution. It's worth a look: <https://victoriancollections.net.au>

### Perth visitors in March

Matthew Fagan, great nephew of Cecil Parkes, the well-known child prodigy violinist, came in to talk about his relative's involvement with the theatre. Cecil, his pianist wife and cellist Christine Fraillon, were the Strad Trio engaged by producer Frank Talbot to perform during film intervals and before the main theatre program commenced.

### Public enquiries

The Archives receives queries every week from local and international researchers wanting information about performances in the theatre, the library, its staff or the early Mechanics Institution. No matter how long the research takes we usually find some relevant information and forward it.

We have ascertained, for example, that our large, wood-based, Gaunt barometer, hanging on the wall in the archives room was purchased in 1884. Several minute books were perused before this information was found and not everyone is able to read the fading hand-writing.

Many queries are from people working on family

histories evidenced by the number of queries about relatives who have worked in the Library. Often a copy of the relevant annual report provides the necessary information for the family, as each one lists names of staff and committee members.

### **Marcus Clarke**

The Library hosts a Marcus Clarke lecture annually and the Marcus Clarke lectures needed some images and facts to publicise them. Naturally the archive's volunteers found everything needed. Clarke was a committee member from 1876 to 1879.

### **Donation**

Several valuable items have been donated from members and historians and in 2016 we received a small book printed in 1856: "Discovery and settlement of Port Phillip" by James Bonwick and revised by William Westgarth. The book discusses the first explorations in Victoria, settlement of areas by Batman and Fawkner and also notes hotels and licences, religion and amusements – a very good source of background material for researchers.

### **Published article**

Margaret Bowman continued to be associated with our archives, writing a paper about a scrapbook compiled from 1857 by Elizabeth Douglas, wife of socially prominent Tasmanian, businessman, Alfred Douglass. Building a scouring mill near Geelong, the Douglas' family set up house on a cliff above Eastern Beach. Margaret located the scrapbook when she was researching her book about the artist George Alexander Gilbert, Secretary/Librarian of the Melbourne Mechanics' Institution 1844-1850. The book is titled *"Cultured Colonists: George Alexander Gilbert and his family, settlers in Port Phillip"* published in 2014. The scrapbook contained a pair of engravings of the tomb of Miss Anne Drysdale, a respected "lady squatter" in the region; this introduced Margaret to the scrapbook and drew her into the Douglass story which was published in the journal "La Trobeana", November 2016.

### **Archives Website**

A renovation of the archives website was

completed by Lawana Coulson and James Baker. It is worth spending some time reading about the history of this amazing institution. There are many stories, descriptions and images to see.

Photographs of some of our most valuable artefacts were taken by Peter Itaak when he came to record the building exterior. Many of these images can now be viewed alternating on the right-hand-side column on the archives website:

<http://www.mahistory.org.au/>

For researchers we have included digitised versions of annual reports and minutes up to 1939. Naturally, later editions are available on request to those who have an interest in Melbourne's history and heritage.

*Marjorie Dalvean*

**Archivist**

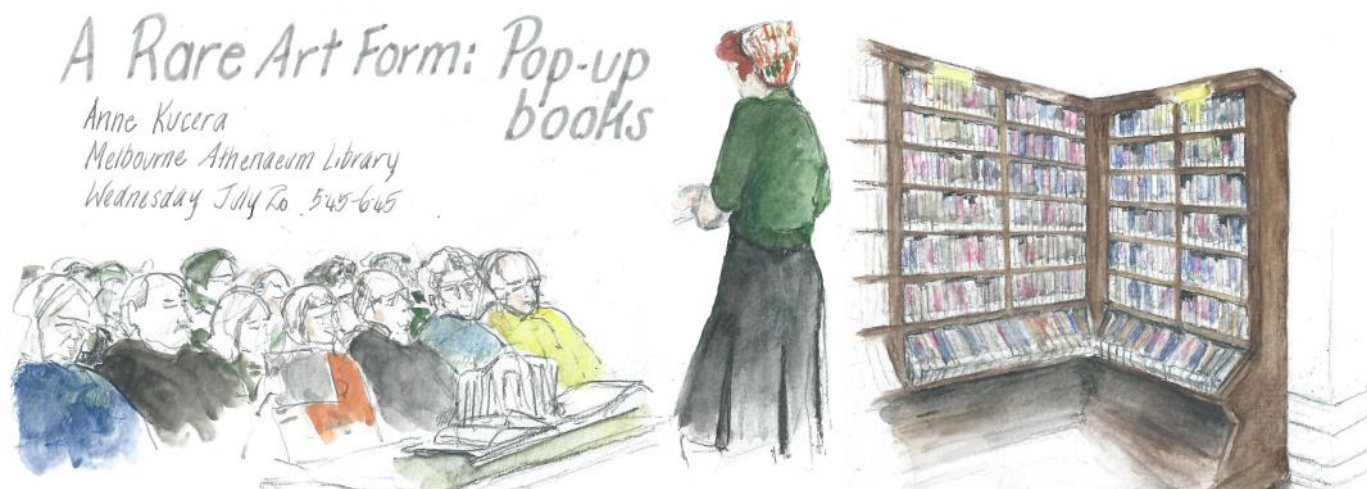
Sue with Archives Volunteer Coordinator Marjorie Dalvean





# THE MELBOURNE ATHENAEUM IN PICTURES 2016

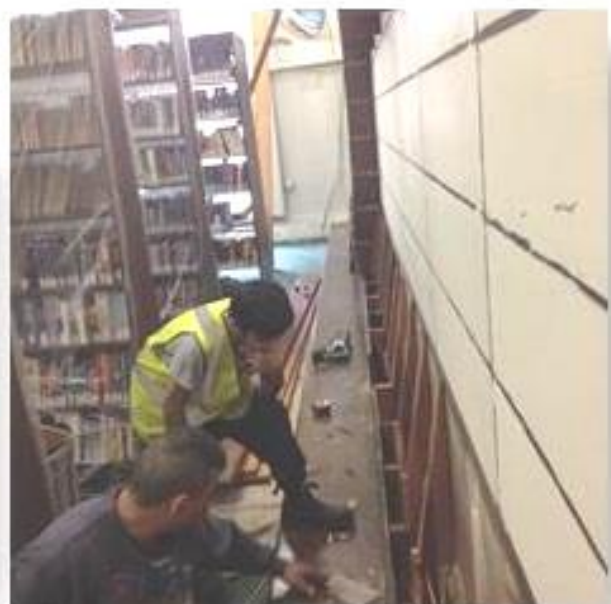
Monthly events and activities included Anne Kucera artist residency and talk during Rare Book Week, a book launch for Nick Richardson's *The Game of Their Lives* with special guest Richmond Football Club CEO, Brendon Gale, artwork installation by Fikaris for Blindsight Festival, guitarist Ysk and author of *The Dressmaker*, Rosalie Ham.







Games day, Community History Awards, Harp-ist Marshall Maguire, Prof Stuart Macintyre on Marcus Clarke, and John Merceica continues to build our beautiful shelving.



## 2016 Highlights

*"Body in the Library" Short Story Prize*

Christine Moffat , Winner (\$1,000 prize)

Ellen Vickerman , Runner Up. (\$500 prize)

*Music in the Library*

With Inventi Ensemble, Matthew Horsley,  
Miranda Hill, Ysk.

*In Conversation*

Luka Bloom with Martin Flanagan

*Book Launches*

The Game of their Lives by Nick Richardson, The  
Fighter by Arnold Zable, Award Winning  
Australian Fiction published by Melbourne Books,  
Famous People who have met me by Greg  
Noakes

*Speakers*

Rosalie Ham (The Dressmaker)

Prof Stuart McIntyre (2016 Marcus Clarke  
Lecture)

Anne Kucera (Pop Up book artist)

Richard Overell (Collecting Travel Books)

Verso Lectures (the book as an art form)

*Visitors to the library*

Warnambool Seniors

Tertiary Library students from Victoria University,  
RMIT University, Box Hill TAFE, Inner City Living  
Group, Darebin U3A, Rosanna Library

*Conferences*

Rose Blustein attended the Library History Forum  
in Brisbane.

Sue Westwood & Rose Blustein delivered a paper  
at the worldwide Mechanics' Institute  
Conference in San Francisco.



## 2015 Annual Giving Appeal

Financial support by members and friends helps to improve our library services and facilities. The ongoing program to upgrade shelving has improved the display and access to the collection. The Melbourne Athenaeum Incorporated acknowledges and thanks those members and friends who generously donated to our 2016 appeal.

The Melbourne Athenaeum Incorporated would like to make special mention to those donors who contribute every year. The impact of a donation each and every year becomes a significant sum over time. More than \$50,000 has been raised through the giving appeal since 2010.

The Public Fund Trustees are Mr Kevin Quigley, Mr Frank Hurley and Mr Esmond Pitt. The following donations were received this year with thanks:

### \$500 or more

Mr Don Smith, Ms Louise Box, Anon x 1

### \$200 or more

Mrs Jean Hedges, Mr Ian McBeath, Dr David McLaren, Ms Kerry Amery, Dr Margaret Malloch, Ms Sue Westwood, Anon x 3

### \$100 or more

Dr Matthew Gisborne, Mr Donald McInnes, Mr Arthur Charlwood, Ms Loreen Chambers, Mr David Chandler, Ms Christine Gibbs, Mrs Dorothy Underwood, Ms Lynette Payne, Ms Diaga Goodall, Mr Brian Salter-Duke, Prof Wallace Kirsop, Mrs Pam Baragwanath, Mr Maurice Joyce, Anon x 12

### Up to \$100

Mr Bruce Hayman, Norman & Jane Kennedy, Ms Ruth Leonards, Mr Alexander Coy, Ms Susan Brewer, Mr Jim Cusack, Mrs Peggy Bartak, Dr Lawrence Bartak, Ms Margaret McDougall, Mr & Mrs N & L Clark, Mr John Holden, Ms Caroline Debevc, Mrs Patricia Stewart, Mr Greg Hansen, Ms Nina Buchan, Mr James Doughney, Dr Therese Keogh, Dr Sian Supski, Prof Peter Beilharz, Mrs Helen Tregear, Mr Alan Loney.



# **The Melbourne Athenaeum Incorporated**

## **Management Committee**

The following people held Committee positions and twelve meetings were held during 2016  
Three meetings were held by email.

	Members	Meetings Attended	Sub-Committees
	Don Smith, President	9/12	Executive, Property
	Kevin Quigley, Treasurer	11/12	Executive, Finance & Audit
	Sophie Arnold	8/12	Property
	Andrew Barnes	9/12	Executive, Marketing & Membership, Finance & Audit
	Louise Box (elected AGM 2016)	9/10	Marketing & Membership
	Marianne Dunham	11/12	
	Christine Gibbs	10/12	Marketing & Membership
	Matthew Gisborne	5/12	Library
	Barbara Gliddon	9/12	Marketing & Membership
	Athanasios Tsakonas	10/12	Library, Property



# The Melbourne Athenaeum Incorporated

**Patron:** The Hon Linda Dessaux AM, Governor of Victoria

## Committee of Management

**President:** Don Smith  
**Vice President:** Andrew Barnes  
**Treasurer:** Kevin Quigley  
**Committee:** Sophie Arnold  
Louise Box  
Marianne Dunham  
Christine Gibbs  
Matthew Gisborne  
Barbara Gliddon  
Athanasios Tsakonas

**Athenaeum Staff:** Sue Westwood, Business Manager  
Rose Blustein, Librarian  
James Baker  
Tom Coleman  
Clare Murayama  
Anna Clatworthy  
Penny Cook  
Katy Li  
David Pryor (Accountant)  
Caroline Debevc (Senior Bookkeeper)

## Library volunteers

Perry Anderson  
Leah Beranek  
Aaron Cook  
Norma Gates  
Wallis Gandell  
Lynne Johnston  
Marilyn Jones  
Moyra McAllister  
Pat Miller

## Archive volunteers

Marjorie Dalvean  
Judith Chivers  
Natalie Chiodo  
Gerry Ely  
Kaye Goldenberg  
Ruby Gray  
Anne Marsden  
Christine Perkins  
Anthony Perrin  
Karin Zilko  
Peter Ittak (Photographer)

## Honorary Members

Marjorie Dalvean  
Moyra McAllister  
Leila Winchcombe

The Melbourne Athenaeum Incorporated  
188 Collins Street  
Melbourne Victoria 3000  
P O Box 225 Flinders Lane, Melbourne 8009  
Telephone: (03) 9650 3100 Fax (03) 9654 9776  
Email: [library@melbourneathenaeum.org.au](mailto:library@melbourneathenaeum.org.au)  
[www.melbourneathenaeum.org.au](http://www.melbourneathenaeum.org.au)

# **The Melbourne Athenaeum Incorporated**

## ***The Pleasure of Words***

### **Library Opening Hours 2017**

Mon/Tues/Thurs	10.00am—6.00pm
Wed:	10.00am—8.00pm
Fri	10.00am—4.00pm
Sat:	10.00am—2.00pm

### **Annual Membership Subscription**

Full:	\$99.00
Concession:	\$89.00

### **Membership benefits:**

- A historic library located in the heart of Collins Street;
- The latest books, magazines, newspapers, DVDs;
- Victoria's finest Crime Fiction and Biography Collections;
- A growing collection of eBooks and free IT help for readers and tablets;
- Live music performances, lectures, book clubs held regularly;
- Free internet access;
- Friendly staff and a welcoming retreat, offering tea and coffee.



The Melbourne Athenaeum Incorporated  
188 Collins Street  
Melbourne Victoria 3000  
P O Box 225 Flinders Lane, Melbourne 8009  
Telephone: (03) 9650 3100 Fax (03) 9654 9776  
Email: [library@melbourneathenaeum.org.au](mailto:library@melbourneathenaeum.org.au)  
[www.melbourneathenaeum.org.au](http://www.melbourneathenaeum.org.au)



# **The Melbourne Athenaeum Inc.**

Reg. No. A0010369T

## **Financial Statements**

**For the Year Ended 31 December 2016**

**The Melbourne Athenaeum Inc.**

Reg. No. A0010369T

**Contents**

**For the Year Ended 31 December 2016**

	<b>Page</b>
<b>Financial Statements</b>	
Committee's Report	1
Auditor's Independence Declaration	2
Statement of Income and Expenditure	3
Statement of Financial Position	4
Statement of Changes in Members' Funds	5
Statement of Cash Flows	6
Notes to the Financial Statements	7
Statement by Members of the Committee	13
Independent Audit Report	14
Income and Expenditure Account	16

**The Melbourne Athenaeum Inc.**

Reg. No. A0010369T

**Committee's Report**

**31 December 2016**

The committee members submit the financial report of the Association for the financial year ended 31 December 2016.

**1. General Information**

**Committee Members**

The names of the committee members at any time during, or since the end of, the year are:

Names	Position	Resigned	Appointed
Don Smith	President		
Andrew Barnes	Vice- President		
Kevin Quigley	Treasurer		
Sophie Arnold	Committee member		
Agnes Cusack	Committee member	18 May 2016	
Matthew Gisborne	Committee member		
Barbara Gliddon	Committee member		
Christine Gibbs	Committee member		
Athanasios Tsakonas	Committee member		
Louise Box	Committee member		18 May 2016
Marianne Dunham	Committee member		18 May 2016

Committee members have been in office since the start of the financial year to the date of this report unless otherwise stated.

**Principal activities**

The principal activities of the Association during the financial year were to manage a heritage building, provide a library and encourage cultural activity.

**Significant changes**

No significant change in the nature of these activities occurred during the year.

**2. Operating results and review of operations for the year**

**Operating result**

The surplus of the Association for the financial year amounted to \$ 55,567(2015: \$ 36,034).

Signed in accordance with a resolution of the Members of the Committee:

President:   
Don Smith

Treasurer:  FCA  
Kevin Quigley

Dated 15 March 2017



**The Melbourne Athenaeum Inc.**

Reg. No. A0010369T

**Auditor's Independence Declaration to the Committee of The Melbourne Athenaeum Inc.**

I declare that, to the best of my knowledge and belief, during the year ended 31 December 2016, there have been:

- (i) no contraventions of the auditor independence requirements in relation to the audit; and
- (ii) no contraventions of any applicable code of professional conduct in relation to the audit.

Andrew Fisher, Partner (auditor registration number 306364) on behalf of  
Banks Group Assurance Pty Ltd, Chartered Accountants  
Authorised audit company registration number 294178 (ACN 115 749 598)

15 March 2017

Melbourne, Australia

**The Melbourne Athenaeum Inc.**

Reg. No. A0010369T

**Statement of Income and Expenditure  
For the Year Ended 31 December 2016**

	Note	2016 \$	2015 \$
<b>Income</b>			
Revenue	2	578,784	587,014
Other income	2	11,858	13,781
<b>Total income</b>		<b>590,642</b>	<b>600,795</b>
<b>Expenses</b>			
Advertising and promotion		9,428	35,361
Depreciation and amortisation expense		27,827	30,254
Employee benefits expense		222,245	200,290
Insurance		48,208	43,915
Office and administration costs		25,201	19,054
Other expenses		118,997	115,722
Repairs and maintenance		55,377	92,826
Rates, taxes and land tax		27,792	27,339
<b>Total expenses</b>		<b>535,075</b>	<b>564,761</b>
Surplus attributable to members		<b>55,567</b>	<b>36,034</b>

The accompanying notes form part of these financial statements.

**The Melbourne Athenaeum Inc.**

Reg. No. A0010369T

**Statement of Financial Position****31 December 2016**

	Note	2016 \$	2015 \$
<b>ASSETS</b>			
<b>CURRENT ASSETS</b>			
Cash and cash equivalents	3	430,959	433,711
Receivables	4	836	6,469
Other non-financial assets	5	30,269	32,858
<b>TOTAL CURRENT ASSETS</b>		<b>462,064</b>	<b>473,038</b>
<b>NON-CURRENT ASSETS</b>			
Property, plant and equipment	6	2,881,734	2,848,708
<b>TOTAL NON-CURRENT ASSETS</b>		<b>2,881,734</b>	<b>2,848,708</b>
<b>TOTAL ASSETS</b>		<b>3,343,798</b>	<b>3,321,746</b>
<b>LIABILITIES</b>			
<b>CURRENT LIABILITIES</b>			
Trade and other payables	7	33,419	61,743
Employee benefits	8	21,263	19,838
Other liabilities	9	20,447	27,063
<b>TOTAL CURRENT LIABILITIES</b>		<b>75,129</b>	<b>108,644</b>
<b>NON-CURRENT LIABILITIES</b>			
<b>TOTAL LIABILITIES</b>		<b>75,129</b>	<b>108,644</b>
<b>NET ASSETS</b>		<b>3,268,669</b>	<b>3,213,102</b>
<b>MEMBERS' FUNDS</b>			
Accumulated surplus		3,268,669	3,213,102
<b>TOTAL MEMBERS' FUNDS</b>		<b>3,268,669</b>	<b>3,213,102</b>

The accompanying notes form part of these financial statements.



**The Melbourne Athenaeum Inc.**

Reg. No. A0010369T

**Statement of Changes in Members' Funds**

**For the Year Ended 31 December 2016**

**2016**

	<b>Accumulated surplus</b>	<b>Total</b>
	<b>\$</b>	<b>\$</b>
<b>Balance at 1 January 2016</b>	<b>3,213,102</b>	<b>3,213,102</b>
Surplus attributable to members	<b>55,567</b>	<b>55,567</b>
<b>Balance at 31 December 2016</b>	<b>3,268,669</b>	<b>3,268,669</b>

**2015**

	<b>Accumulated surplus</b>	<b>Total</b>
	<b>\$</b>	<b>\$</b>
<b>Balance at 1 January 2015</b>	<b>3,177,068</b>	<b>3,177,068</b>
Surplus attributable to members	<b>36,034</b>	<b>36,034</b>
<b>Balance at 31 December 2015</b>	<b>3,213,102</b>	<b>3,213,102</b>

The accompanying notes form part of these financial statements.

**The Melbourne Athenaeum Inc.**

Reg. No. A0010369T

**Statement of Cash Flows**  
**For the Year Ended 31 December 2016**

	<b>Note</b>	<b>2016</b> \$	<b>2015</b> \$
<b>CASH FLOWS FROM OPERATING ACTIVITIES:</b>			
Receipts from subscriptions		<b>59,068</b>	59,838
Payments to suppliers and employees		<b>(589,337)</b>	(624,619)
Rental income		<b>553,223</b>	548,163
Interest received		<b>11,858</b>	13,781
Receipt from grants		<b>23,289</b>	7,843
Other receipts		-	35,820
Net cash provided by operating activities	10	<b>58,101</b>	40,826
<b>CASH FLOWS FROM INVESTING ACTIVITIES:</b>			
Purchase of property, plant and equipment		<b>(60,853)</b>	(1,271)
Net cash used in investing activities		<b>(60,853)</b>	(1,271)
<b>CASH FLOWS FROM FINANCING ACTIVITIES:</b>			
Net (decrease)/ increase in cash and cash equivalents held		<b>(2,752)</b>	39,555
Cash and cash equivalents at beginning of year		<b>433,711</b>	394,156
Cash and cash equivalents at end of financial year	3	<b>430,959</b>	433,711

The accompanying notes form part of these financial statements.

**The Melbourne Athenaeum Inc.**

Reg. No. A0010369T

**Notes to the Financial Statements  
For the Year Ended 31 December 2016**

**1 Summary of Significant Accounting Policies**

**(a) Basis of Preparation**

This financial report is a special purpose financial statement prepared in order to satisfy the financial reporting requirements of the Associations Incorporation Reform Act 2012. The committee has determined that the not-for-profit Association is not a reporting entity.

The financial statements have been prepared in accordance with the recognition and measurement requirements of the Australian Accounting Standards and Accounting Interpretations, and the disclosure requirements of AASB 101 *Presentation of Financial Statements*, AASB 107 *Statement of Cash Flows*, AASB 108 *Accounting Policies, Changes in Accounting Estimates and Errors* and AASB 1054 *Australian Additional Disclosures*.

The financial report has been prepared on an accruals basis except as below and is based on historic costs and does not take into account changing money values or, except where specifically stated, current valuations of non-current assets.

The functional and presentation currency of the Melbourne Athenaeum Inc. is Australian dollars. Comparatives are consistent with prior years, unless otherwise stated.

The following significant accounting policies, which are consistent with the previous period unless otherwise stated, have been adopted in the preparation of this financial report.

**(b) Income Tax**

The Association is exempt from income tax under Division 50 of the Income Tax Assessment Act 1997.

**(c) Revenue and Other Income**

Interest revenue is recognised using the effective interest rate method.

Grant and donation revenue is recognised when the association obtains control over the funds. Revenue from membership subscriptions is recognised on a cash basis.

Investment property revenue is recognised as and when receivable under the terms of the lease agreements with the property tenants.

All revenue is stated net of the amount of goods and services tax (GST).

**Other income**

Other income is recognised on an accruals basis when the Association is entitled to it.

**(d) Goods and Services Tax (GST)**

Revenues, expenses and assets are recognised net of the amount of GST, except where the amount of GST incurred is not recoverable from the Australian Tax Office. In these circumstances, the GST is recognised as part of the cost of acquisition of the asset or as part of an item of the expense. Receivables and payables in the statement of financial position are shown inclusive of GST.

**(e) Property, Plant and Equipment**

Property is carried at the Committee's valuation or at cost.

## **Notes to the Financial Statements**

**For the Year Ended 31 December 2016**

### **1 Summary of Significant Accounting Policies continued**

#### **(e) Property, Plant and Equipment continued**

Plant and equipment is carried at cost less, where applicable, any depreciation.

The depreciable amount of all plant and equipment is depreciated over the useful life of the assets.

The collection is carried at the Committee's valuation.

#### **(f) Cash and cash equivalents**

Cash and cash equivalents include cash on hand, deposits held at call with banks and other short-term highly liquid investments with original maturities of six months or less.

#### **(g) Employee benefits**

Provision is made for the Association's liability for employee benefits arising from services rendered by employees to the end of the reporting period. Employee benefits that are expected to be settled within one year have been measured at the amounts expected to be paid when the liability is settled.

Employee benefits expected to be settled more than twelve months after the end of the reporting period have been measured at the present value of the estimated future cash outflows to be made for those benefits. In determining the liability, consideration is given to employee wage increases and the probability that the employee may satisfy vesting requirements. Changes in the measurement of the liability are recognised in income and expenditure.

Employee benefits are presented as current liabilities in the statement of financial position if the Association does not have an unconditional right to defer settlement of the liability for at least 12 months after the reporting date regardless of the classification of the liability for measurement purposes under AASB 119.

### **2 Revenue and Other Income**

#### **Revenue from continuing operations**

	<b>2016</b>	<b>2015</b>
	<b>\$</b>	<b>\$</b>
Revenue		
- Grant income	<b>21,172</b>	5,596
- Provision of services	<b>821</b>	457
- Rental income	<b>468,557</b>	494,456
- Member subscriptions	<b>53,699</b>	54,398
- Other trading revenue	<b>34,535</b>	32,107
<b>Total operating revenue</b>	<b>578,784</b>	587,014
Other revenue		
- Interest income	<b>11,858</b>	13,781
<b>Total other revenue</b>	<b>11,858</b>	13,781
<b>Total Revenue</b>	<b>590,642</b>	600,795



**The Melbourne Athenaeum Inc.**

Reg. No. A0010369T

**Notes to the Financial Statements  
For the Year Ended 31 December 2016****3 Cash and cash equivalents**

	<b>2016</b>	<b>2015</b>
	<b>\$</b>	<b>\$</b>
Cash and cash equivalents	<u>430,959</u>	<u>433,711</u>
<b>Cash and cash equivalents</b>	<b><u>430,959</u></b>	<b><u>433,711</u></b>

**4 Receivables**

	<b>2016</b>	<b>2015</b>
	<b>\$</b>	<b>\$</b>
CURRENT		
Receivables	9,187	13,910
Provision for impairment	<u>(8,351)</u>	<u>(7,441)</u>
<b>Total current receivables</b>	<b><u>836</u></b>	<b><u>6,469</u></b>

The carrying value of receivables is considered a reasonable approximation of fair value due to the short-term nature of the balances.

The maximum exposure to credit risk at the reporting date is the fair value of each class of receivable in the financial statements.

**5 Other non-financial assets**

	<b>2016</b>	<b>2015</b>
	<b>\$</b>	<b>\$</b>
CURRENT		
Prepayments	<u>30,269</u>	<u>32,858</u>
<b>Total non-financial assets</b>	<b><u>30,269</u></b>	<b><u>32,858</u></b>

**The Melbourne Athenaeum Inc.**

Reg. No. A0010369T

**Notes to the Financial Statements  
For the Year Ended 31 December 2016****6 Property, plant and equipment**

	2016	2015
	\$	\$
Building		
At Committee's valuation	2,200,000	2,200,000
At cost	189,044	189,044
Total building	2,389,044	2,389,044
Total land and building	2,389,044	2,389,044
PLANT AND EQUIPMENT		
Plant and equipment		
At cost	120,961	119,363
Accumulated depreciation	(81,754)	(76,126)
Total plant and equipment	39,207	43,237
Furniture, fixtures and fittings		
At cost	180,309	121,417
Accumulated depreciation	(76,177)	(67,083)
Total furniture, fixtures and fittings	104,132	54,334
Office equipment		
At cost	62,726	62,363
Accumulated depreciation	(61,910)	(61,345)
Total office equipment	816	1,018
The Book Collection		
At Committee's valuation	179,343	179,343
Theatre Fittings		
At cost	250,694	250,694
Accumulated depreciation	(81,502)	(68,962)
Total theatre fittings	169,192	181,732
Total plant and equipment	492,690	459,664
Total property, plant and equipment	2,881,734	2,848,708

**The Melbourne Athenaeum Inc.**

Reg. No. A0010369T

**Notes to the Financial Statements****For the Year Ended 31 December 2016****7 Trade and other payables**

	2016	2015
	\$	\$
CURRENT		
Unsecured liabilities		
Trade payables	8,526	49,977
GST payable/ (refundable)	9,181	(1,115)
Sundry payables and accruals	15,712	12,881
<b>Total trade and other payables</b>	<b>33,419</b>	<b>61,743</b>

**8 Employee Benefits**

Current liabilities		
Provision for employee benefits	21,263	19,838
<b>Total employee benefits</b>	<b>21,263</b>	<b>19,838</b>

**9 Other liabilities**

CURRENT		
Income received in advance	20,447	27,063
<b>Total other liabilities</b>	<b>20,447</b>	<b>27,063</b>

**10 Cash Flow Information**

<b>Reconciliation of result for the year to cashflows from operating activities</b>		
Surplus for the year	55,567	36,034
Cash flows excluded from surplus attributable to operating activities		
Non-cash flows in surplus:		
- depreciation	27,827	30,254
Changes in assets and liabilities:		
- decrease in receivables	5,632	11,993
- decrease/ (increase) in other non-financial assets	2,589	(13,242)
- (decrease)/ increase in trade and other payables	(28,323)	5,039
- (decrease) in other liabilities	(6,616)	(36,311)
- increase in employee benefits	1,425	7,059
<b>Cashflow from operations</b>	<b>58,101</b>	<b>40,826</b>

**The Melbourne Athenaeum Inc.**

Reg. No. A0010369T

**Notes to the Financial Statements  
For the Year Ended 31 December 2016**

**11 Capital Commitments**

The Athenaeum has entered into a contract with Nexgen for the supply of a PABX unit and ancillary equipment for the cost of \$10,000. At 31 December 2016, \$5,000 was outstanding.

**12 Remuneration of Auditors**

	2016	2015
	\$	\$
Remuneration of the auditor of the Association, Banks Group Assurance Pty Ltd, for:		
- Auditing or reviewing the financial report	6,400	5,400

**13 The Melbourne Athenaeum Deductible Gift Recipient Fund**

The Melbourne Athenaeum Deductible Gift Recipient Fund was created to keep donations separate from the Athenaeum's general funds and facilitate the tax deductibility of donations, in accordance with the requirements of tax legislation and related guidance. For accounting purposes, the fund is treated as a separate entity to the Melbourne Athenaeum Incorporated and its income and expenditure is not incorporated in these accounts.

**14 Contingencies**

In the opinion of the Committee of Management, the Association did not have any contingencies at 31 December 2016 (31 December 2015: None).

**15 Events Occurring After the Reporting Date**

The financial report was authorised for issue on 15 March 2017 by the Committee of Management.

No matters or circumstances have arisen since the end of the financial year which significantly affected or may significantly affect the operations of the Association, the results of those operations or the state of affairs of the Association in future financial years.

**16 Association Details**

The registered office of the association is:

The Melbourne Athenaeum Inc.

188 Collins Street

MELBOURNE VIC 3000



**The Melbourne Athenaeum Inc.**

Reg. No. A0010369T

**Statement by Members of the Committee**

The committee has determined that the Association is not a reporting entity and that this special purpose financial report should be prepared in accordance with the accounting policies outlined in Note 1 to the financial statements.

In the opinion of the committee the financial report as set out on pages 3 to 12:

1. Presents fairly the financial position of The Melbourne Athenaeum Inc. as at 31 December 2016 and its performance for the year ended on that date.
2. At the date of this statement, there are reasonable grounds to believe that The Melbourne Athenaeum Inc. will be able to pay its debts as and when they fall due.

This statement is made in accordance with a resolution of the committee and is signed for and on behalf of the committee by:

President .....  
Don Smith

Treasurer .....  
Kevin Quigley

Dated 15 March 2017

**The Melbourne Athenaeum Inc.**

Reg. No. A0010369T

**Independent Audit Report to the members of The Melbourne Athenaeum Inc.**

**Report on the Financial Report**

We have audited the accompanying financial report, being a special purpose financial report of The Melbourne Athenaeum Inc., which comprises the statement of financial position as at 31 December 2016, the statement of income and expenditure, statement of changes in members' funds and statement of cash flows for the year then ended, notes comprising a summary of significant accounting policies and other explanatory information, and the statement by members of the committee.

*Officers' Responsibility for the Financial Report*

The committee of The Melbourne Athenaeum Inc. is responsible for the preparation of the financial report and has determined that the basis of preparation described in Note 1, is appropriate to meet the requirements of the Associations Incorporation Reform Act 2012 and is appropriate to meet the needs of the members. The officers' responsibility also includes such internal controls deemed necessary to enable the preparation and fair presentation of a financial report that is free from material misstatement, whether due to fraud or error.

*Auditor's Responsibility*

Our responsibility is to express an opinion on the financial report based on our audit. We conducted our audit in accordance with Australian Auditing Standards. Those standards require that we comply with relevant ethical requirements relating to audit engagements and plan and perform the audit to obtain reasonable assurance about whether the financial report is free from material misstatement.

An audit involves performing procedures to obtain audit evidence about the amounts and disclosures in the financial report. The procedures selected depend on the auditor's judgement, including the assessment of the risks of material misstatement of the financial report, whether due to fraud or error. In making those risk assessments, the auditor considers internal control relevant to the entity's preparation and fair presentation of the financial report in order to design audit procedures that are appropriate in the circumstances, but not for the purpose of expressing an opinion on the effectiveness of the entity's internal control. An audit also includes evaluating the appropriateness of accounting policies used and the reasonableness of accounting estimates made by management, as well as evaluating the overall presentation of the financial report.

We believe that the audit evidence we have obtained is sufficient and appropriate to provide a basis for our qualified audit opinion.

*Basis for Qualified Opinion*

As in previous years, the Melbourne Athenaeum Incorporated has not provided for depreciation on the building. This is a departure from the requirements of Australian Accounting Standards AASB 116 "Property, Plant and Equipment." In our opinion, depreciation should be charged in the Statement of Income and Expenditure so as to allocate the depreciable amount over the building's useful life. It has not been practicable for us to determine the effect of non-depreciation of the heritage building on the financial statements.

**The Melbourne Athenaeum Inc.**

Reg. No. A0010369T

**Independent Audit Report to the members of The Melbourne Athenaeum Inc.**

*Qualified Opinion*

In our opinion, except for the possible effects of the matter described in the Basis for Qualified Opinion paragraph, the financial report presents fairly, in all material respects, the financial position of The Melbourne Athenaeum Inc. as at 31 December 2016, and its financial performance and its cash flows for the year then ended in accordance with Australian Accounting Standards and the Associations Incorporation Reform Act 2012.

*Basis of Accounting*

Without modifying our opinion, we draw attention to Note 1 to the financial report which describes the basis of accounting. The financial report is prepared to assist The Melbourne Athenaeum Inc. to comply with the financial reporting provisions of the Associations Incorporation Reform Act 2012. As a result, the financial report may not be suitable for another purpose.

Banks Group Assurance Pty Ltd, Chartered Accountants  
Authorised audit company number 294178 (ACN 115 749 598)

Andrew Fisher, Partner  
Registration number 306364

Melbourne, Australia

15 March 2017

**The Melbourne Athenaeum Inc.**

Reg. No. A0010369T

**For the Year Ended 31 December 2016****Income and Expenditure Account**

	2016	2015
	\$	\$
<b>Income</b>		
Operating grants	21,172	5,596
Rental revenue for property investment	468,557	494,456
Member subscriptions	53,699	54,398
Other trading revenue	34,535	32,107
Other income	11,858	13,781
Provision of services	821	457
<b>Total Income</b>	<b>590,642</b>	<b>600,795</b>
<b>Less: Expenses</b>		
Accounting fees	(23,425)	(24,160)
Advertising and promotion	(9,428)	(29,361)
Auditor's remuneration	(6,531)	(6,832)
Bank charges	(811)	(1,384)
Board and AGM expenses	(782)	(1,239)
Book purchases	(34,647)	(30,736)
Cleaning	(15,614)	(15,696)
Computer expenses	(10,047)	(12,453)
Depreciation	(27,827)	(30,254)
Electricity	(3,655)	(4,222)
Freight and cartage	(131)	(391)
Insurance	(8,082)	(9,558)
Insurance - Building	(40,126)	(34,357)
Land tax	(24,024)	(24,024)
Legal and consulting fees	-	(1,889)
Magazines, journals and periodicals	(3,067)	(2,588)
Member functions and newsletters	(5,829)	(5,300)
Office supplies	(1,911)	(2,241)
Postage	(3,289)	(4,742)
Printing and stationery	(7,752)	(8,297)
Publication Grant	-	(6,000)
Rates and taxes	(3,768)	(3,315)
Repairs and maintenance	(55,377)	(92,826)
Salaries and wages	(197,187)	(183,672)
Staff training	(8,196)	(705)
Subscriptions	(1,854)	(1,917)
Sundry expenses	(19,100)	(5,514)
Superannuation contributions	(16,862)	(15,913)
Telephone	(4,587)	(4,274)
Workers' compensation insurance	(1,166)	(901)
<b>Total Expenses</b>	<b>(535,075)</b>	<b>(564,761)</b>
<b>Surplus</b>	<b>55,567</b>	<b>36,034</b>